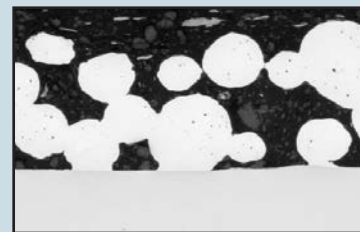




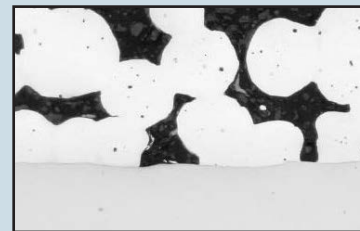
This is a completely maintenance-free composite bearing made of polytetrafluoroethylene (PTFE) resin mixed with a special filler for low friction characteristics as well as optimal strength and dimensional stability of the metal. The phosphor bronze used for the backing provides excellent water resistance. This bearing is identical in construction to the DAIDYNE DDK05 with the lone exception that phosphor bronze is used instead of steel for the backing.

Features

1. The basic features and characteristics of this bearing are identical to those of the DDK05. Refer to pages 54–57 for more information.
2. Provides superior water resistance compared with the DDK05.
3. Constructed of non-magnetic materials.



Prior to breaking in the bearing



Photographic cross-section of a DDK35 after breaking in and operating for a certain period of time.

Suitable applications for DDK35

When using DDK35 for heavy-duty operations, the appearance of the bearing will change during breaking-in. Once broken in, the bearing surface will change to the greenish-grey color like a semi-metallic mat. The areas that bear the brunt of a heavy load will have a dull bronze color. In some cases, the bearing surface could exhibit feathers. These are all typical of a DDK35 that is well broken in and operating normally. Therefore, even though its appearance changes, there is no deterioration of the bearing's performance and it remains suitable for use in extremely long-term operations.

Designing DDK35

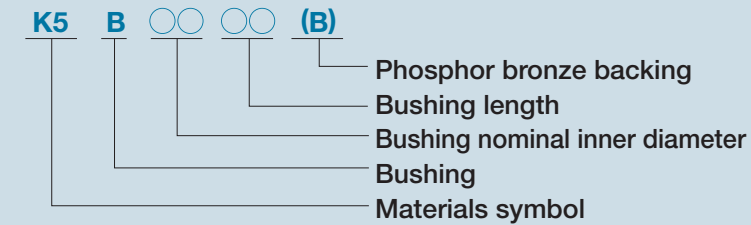
Identical to the DDK05. Refer to "Designing DDK05" on pages 55–57.

DDK35 dimensions and specifications

Bushing inner diameter from 3 to 160 mm

K5B 0303(B)

Designation of Part Number



Dimensions are identical to the DDK05 flanged bushing. Refer to pages 62–63 for more information.

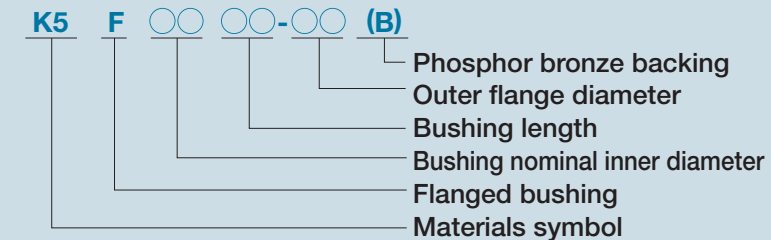
K5B 0303(B)

Please specify by Part No. This product is produced on order only.

Flanged bushing inner diameter from 5 to 60 mm

K5F 0504-10(B)

Designation of Part Number



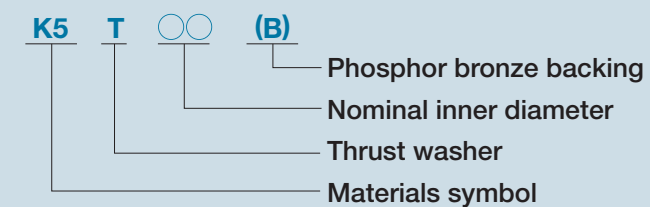
Dimensions are identical to the DDK05 flanged bushing. Refer to pages 62–63 for more information.

K5F 0504-10(B)

Please specify by Part No. This product is produced on order only.

Thrust wash

Designation of Part Number



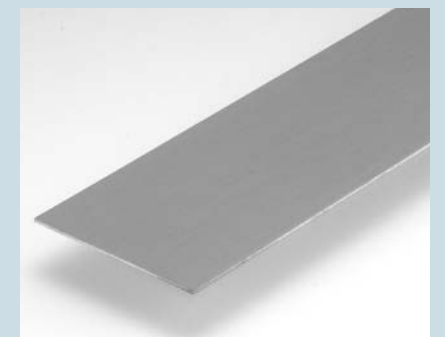
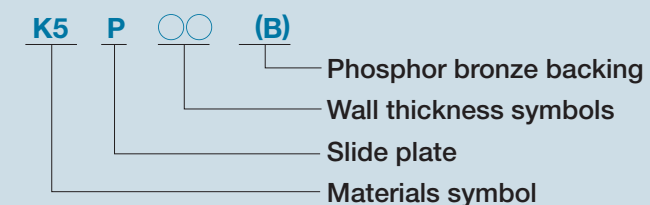
Dimensions are identical to the DDK05 thrust washer. Refer to page 64 for more information.

K5T 06(B)

Please specify by Part No. This product is produced on order only.

Slide plate

Designation of Part Number



Dimensions are identical to the DDK05 slide plate. Refer to page 65 for more information.

K5P 100(B)

Please specify by Part No. This product is produced on order only.