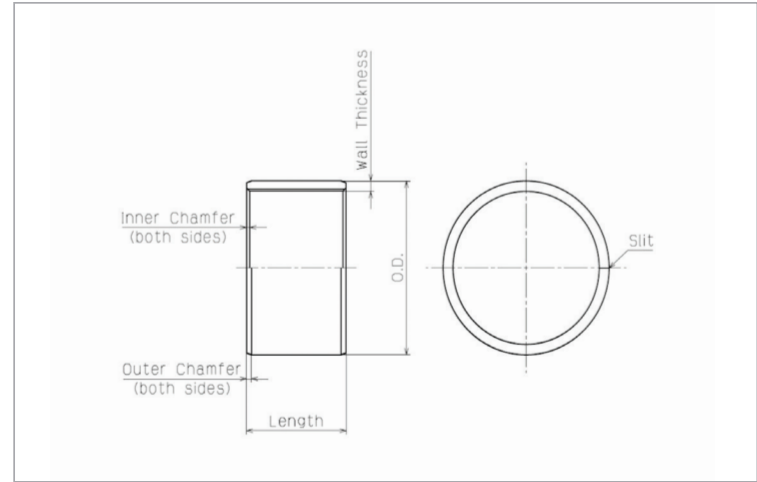
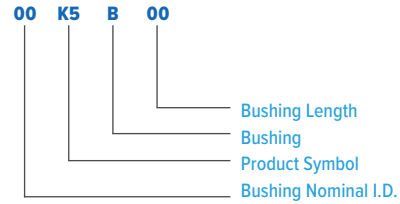


K5B DDK05 Bushing

Bushing Inner Diameter: 1/8 in. to 2 in.

Designation of Part Number



02 K5B 02

Please specify by part number.

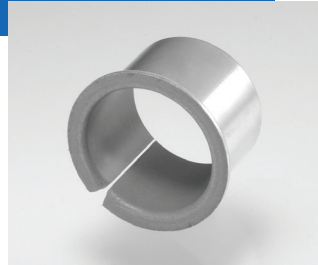
Nominal I.D. and Length indicated are in 1/16 inch increments (For example: 16K5B08 = 1inch I.D. x 1/2 inch length)

(Unit: inch)

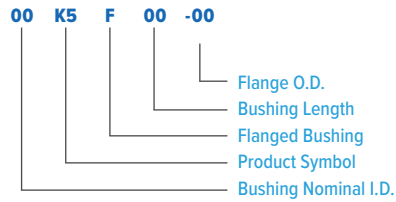
NOMINAL I.D.	RECOMMENDED DIMENSION		NOMINAL O.D.	WALL THICKNESS	Part Number and Bushing Length Tolerance +/- 0.010 (+/- 0.25 mm)																							
	HOUSING I.D.	SHAFT O.D.			02	025	03	04	05	06	08	10	11	12	14	15	16	18	20	22	24	26	28	32	40			
1/8	02	0.1878/0.1873	0.1243/0.1236	3/16	0.0311/0.0301	02 02		02 03																				
5/32	025	0.2191/0.2186	0.1554/0.1547	7/32			025 025		025 04																			
3/16	03	0.2503/0.2497	0.1865/0.1858	1/4				03 03	03 04		03 06																	
1/4	04	0.3128/0.3122	0.2490/0.2481	5/16					04 04		04 06	04 08																
5/16	05	0.3753/0.3747	0.3115/0.3106	3/8				05 03	05 04		05 06	05 08					05 16											
3/8	06	0.4691/0.4684	0.3740/0.3731	15/32	0.0467/0.0457			06 03	06 04	06 05	06 06	06 08	06 10		06 12													
7/16	07	0.5316/0.5309	0.4365/0.4355	17/32					07 04			07 08			07 12													
1/2	08	0.5941/0.5934	0.4990/0.4980	19/32					08 04		08 06	08 08	08 10		08 12	08 14												
9/16	09	0.6566/0.6559	0.5615/0.5605	21/32							09 06	09 08	09 10		09 12													
5/8	10	0.7192/0.7184	0.6240/0.6230	23/32					10 04		10 06	10 08	10 10		10 12	10 14	10 16											
11/16	11	0.7817/0.7809	0.6865/0.6855	25/32	0.0623/0.0611										11 14													
3/4	12	0.8755/0.8747	0.7491/0.7479	7/8					12 04		12 06	12 08	12 10		12 12		12 16											
13/16	13	0.9380/0.9372	0.8116/0.8104	15/16									13 10	13 12			13 18											
7/8	14	1.0005/0.9997	0.8741/0.8729	1					14 04		14 06	14 08		14 12			14 16		14 20									
1	16	1.1255/1.1247	0.9991/0.9979	1 1/8							16 06	16 08		16 12	16 14	16 16	16 20	16 22	16 24									
1 1/8	18	1.2818/1.2808	1.1238/1.1226	1 9/32	0.0780/0.0768					18 06	18 08	18 10	18 11	18 12		18 16												
1 1/4	20	1.4068/1.4058	1.2488/1.2472	1 13/32							20 06				20 12	20 14	20 16		20 20		20 24		20 28					
1 3/8	22	1.5318/1.5308	1.3738/1.3722	1 17/32											22 12		22 16				22 24	22 26	22 28					
1 1/2	24	1.6568/1.6558	1.4988/1.4972	1 21/32								24 08			24 12		24 16	24 18	24 20	24 24	24 26			24 32				
1 5/8	26	1.7818/1.7808	1.6238/1.6222	1 25/32												26 16		26 20		26 24								
1 3/4	28	1.9381/1.9371	1.7487/1.7471	1 15/16	0.0937/0.0925						28 08					28 16		28 20	28 24		28 32							
1 7/8	30	2.0633/2.0621	1.8737/1.8721	2 1/16											30 12		30 16			30 24				30 32				
2	32	2.1883/2.1871	1.9987/1.9969	2 3/16								32 08			32 12		32 15	32 16			32 24		32 28	32 32	32 40			

K5F DDK05 Flanged Bushing

Bushing Inner Diameter: 3/8 in. to 1 1/4 in.

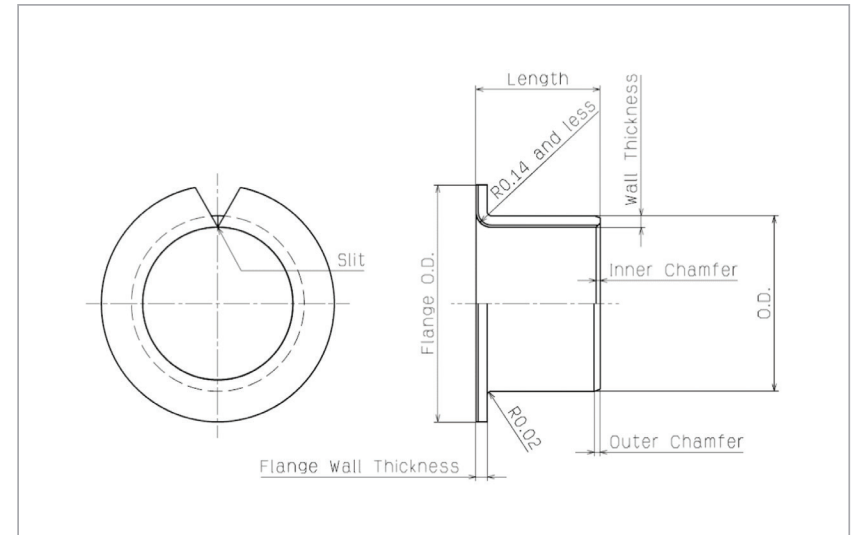


Designation of Part Number



06 K5F 04 -11

Please specify by part number.



Nominal I.D., Length and Flange O.D. indicated are in 1/16 inch increments
(For example: 12K5F06-18 = 3/4 inch I.D. x 3/8 inch length x 1 1/8 inch flange O.D.)

(Unit: inch)

NOMINAL I.D.		RECOMMENDED DIMENSION		NOMINAL O.D.	NOMINAL FLANGE O.D.	FLANGE WALL THICKNESS	WALL THICKNESS	Part Number and Nominal Length						
		HOUSING I.D.	SHAFT O.D.					04	06	08	12	16	20	
3/8	06	0.4691 / 0.4684	0.3740 / 0.3731	15/32	11/16	11	0.0472 / 0.0413	0.0467 / 0.0457	06 04-11	06 06-11	06 08-11			
1/2	08	0.5941 / 0.5934	0.4990 / 0.4980	19/32	13/16	13			08 04-13	08 06-13		08 12-13		
5/8	10	0.7192 / 0.7184	0.6240 / 0.6230	23/32	15/16	15				10 06-15				
3/4	12	0.8755 / 0.8747	0.7491 / 0.7479	7/8	1 1/8	18	0.0630 / 0.0571	0.0623 / 0.0611		12 06-18	12 08-18	12 12-18		
7/8	14	1.0005 / 0.9997	0.8741 / 0.8729	1	1 1/4	20					14 08-20			
1	16	1.1255 / 1.1247	0.9991 / 0.9979	1 1/8	1 3/8	22					16 08-22	16 12-22	16 16-22	16 20-22
1 1/4	20	1.4068 / 1.4058	1.2488 / 1.2472	1 13/32	1 3/4	28	0.0780 / 0.0720	0.0780 / 0.0768					20 16-28	